



Marlins Turn, Hemel Hempstead, HP1 3LW

Offers In Excess Of £400,000

Situated in the charming area of Marlins Turn, Gadebridge, this delightful end of terrace house offers a perfect blend of comfort and style with scope to extend STPP. With three well-proportioned bedrooms, this property is ideal for families or those seeking extra space. The two inviting reception rooms provide ample room for relaxation and entertaining, making it a wonderful home for gatherings with friends and family.

The heart of the home is the impressive 21'2 kitchen/diner, which is designed to be both functional and welcoming. This spacious area is perfect for enjoying meals together or hosting dinner parties. The property benefits from gas central heating and double glazing, ensuring warmth and comfort throughout the colder months.

Outside, you will find a charming summer house, complete with light, which offers a versatile space that can be used for a variety of purposes, whether it be a home office, a playroom, or a tranquil retreat for reading and relaxation.

This end-of-terrace property is situated in a friendly neighbourhood, providing a sense of community while still being conveniently located near local amenities and transport links. With its appealing features and inviting atmosphere, this home is a wonderful opportunity for anyone looking to settle in Hemel Hempstead. Don't miss the chance to make this lovely property your own.

Entrance Hallway

Lounge 12'0 x 11'4 (3.66m x 3.45m)



Bedroom One 11'7 x 11'0 (3.53m x 3.35m)

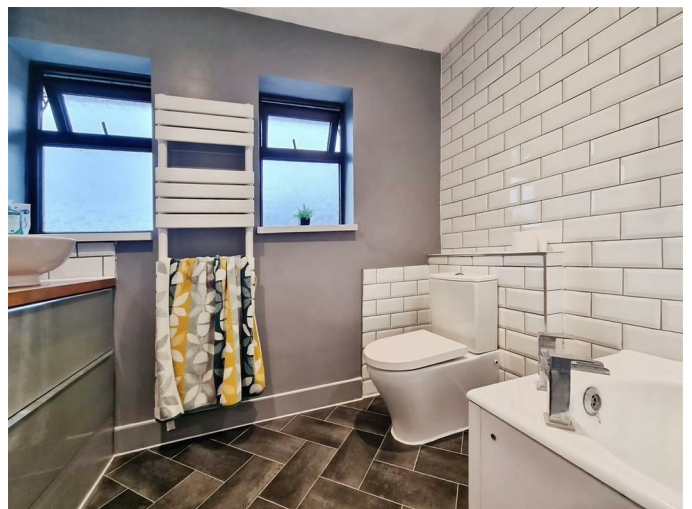


Bedroom Two 10'4 x 8'1 (3.15m x 2.46m)



Bedroom Three 11'1 x 6'1 (3.38m x 1.85m)

Bathroom



Kitchen/Diner 21'2 x 10'6 (6.45m x 3.20m)



Utility 10'8 x 4'9 (3.25m x 1.45m)



Landing

Rear Garden



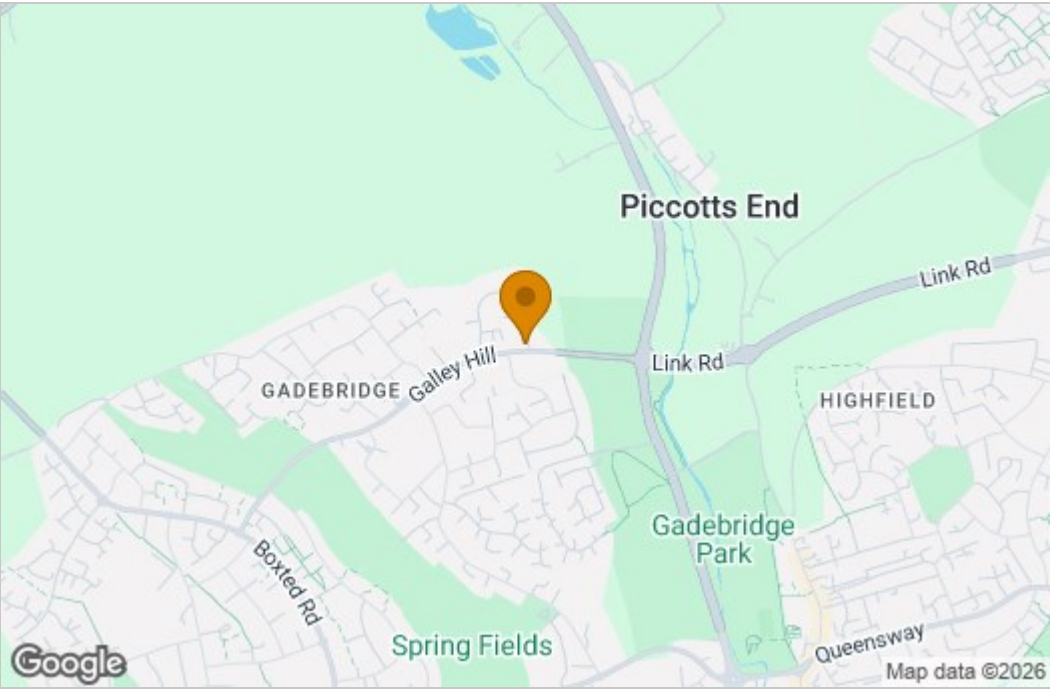
Summer House



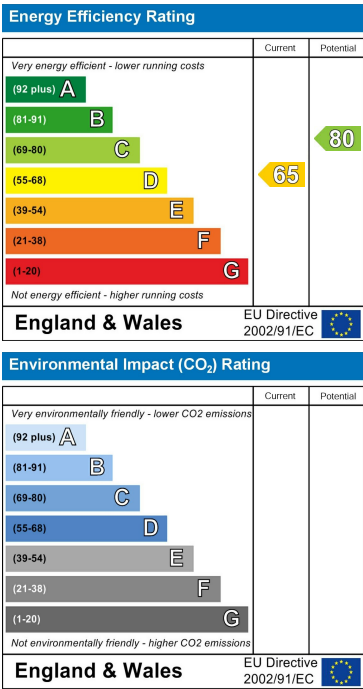
Floor Plan



Area Map



Energy Efficiency Graph



These particulars, whilst believed to be accurate are set out as a general outline only for guidance and do not constitute any part of an offer or contract. Intending purchasers should not rely on them as statements of representation of fact, but must satisfy themselves by inspection or otherwise as to their accuracy. No person in this firms employment has the authority to make or give any representation or warranty in respect of the property.